



TDI CITY, PANIPAT The New Panipat

TDI City, in sector 36, 37, 38 & 39 is the focal point of future development with its strategic location and connectivity to NH-1. A 350 acres (approx.) world class self contained township will have the international standard facilities for the residents. Complete with residential plots, villas, low rise floors, SCO, commercial zones, healthcare facilities and schools it is an integrated development with future in mind. The township also provides its residents one to one 'tete a tete' with nature with its lush green landscaped open areas making it the most coveted address in the district. TDI City is getting complete as per the predetermined schedule. Other projects within the campus are on the way and coming up with the preset rapidity.





An exquisite dimension to independent living

TDI City presents independent floors that are fine tuned with the strings of unmatched lifestyle, affordability and independence. Bond with the world while keeping your freedom intact is what underlines these residential spaces. The low rise living units are qualitatively superb and incorporate the finest architectural and civil engineering inputs. The interiors are alluring, and every room offers more in terms of value. The amenities within the sprawling campus only shore up the lifestyle to delightfully pleasant levels.

- 3 & 4 Bedroom spacious apartments • Well designed for ample natural light inflow
- Planned for cross ventilation • Rear lawn for ground floor
- Large balcony for 1st & 2nd floors • Ample parking space (250 & 350 sq. yard)

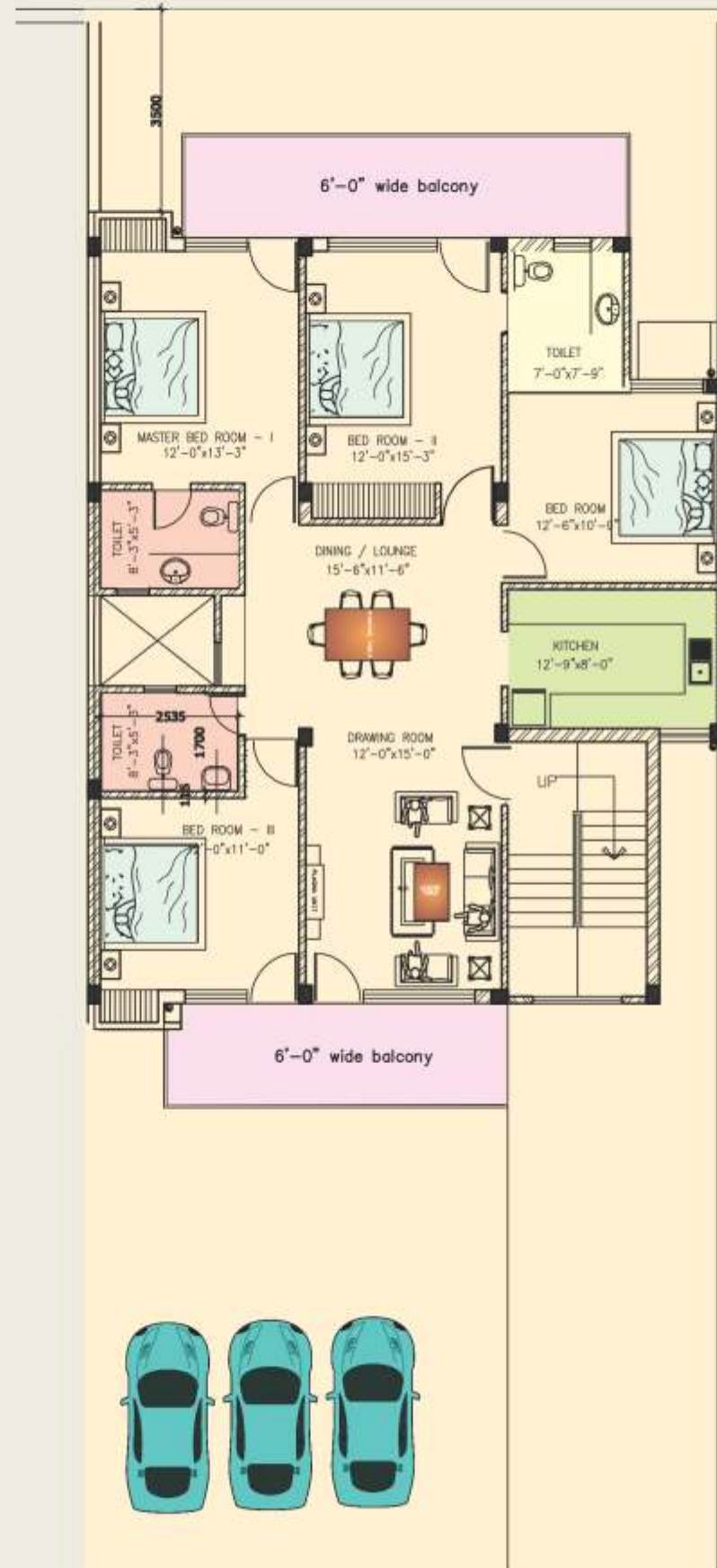


Additional aura of ultimate safety & professional maintenance

Security at the TDI City is of supreme importance. The entire length and breadth of TDI City has been made secure by applying 3-tier surveillance whereby the entire township is under efficient glare of CCTV, manned security and a separate security arrangement for every block. So that cover of convenience and safety accompanies you everywhere. Along with security manned by well-trained professionals, the essential maintenance features like electricity, plumbing, sanitation etc. are also well looked-after by a competent team of personnel.

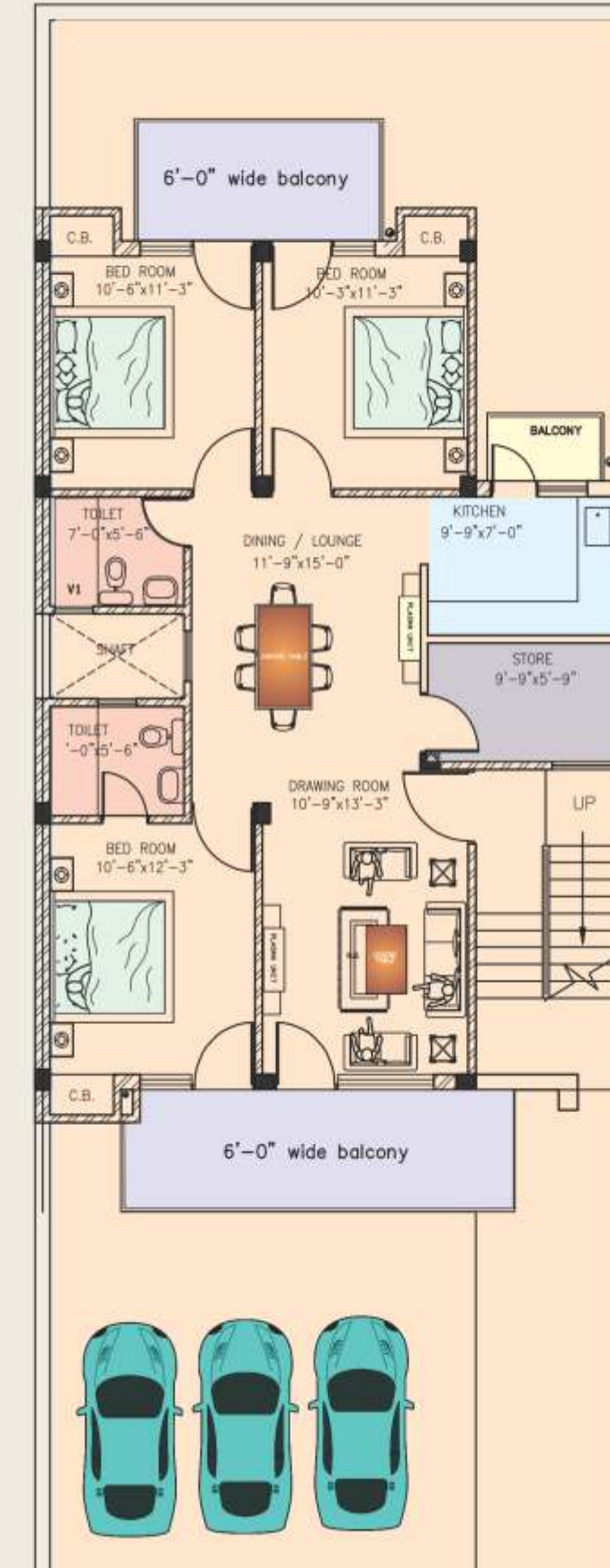
350 SQ. YD. FLOOR

Floor area	=	1562.17 Sq.ft
Balcony	=	297.08 Sq.ft
Mumty Area	=	51.23 sq.ft
Total		1910.48sq ft



250 SQ. YD. FLOOR

Floor area	=	1171.01 Sq.ft
Balcony	=	214.85 Sq.ft
Mumty Area	=	45.53 sq.ft
Total		1431.39 sq ft





PAYMENT PLAN

250 Sq. Yd. Plot with Built up Area of 1431.39 Sq. ft.	
Floor	Rate
Ground Floor	3300000
First Floor	3100000
Second Floor	3200000

Note-PLC @50000 Fixed Per unit for Wide Road + EDC and IDC extra as per actual

350 Sq. Yd. Plot with Built up Area of 1910.48 Sq. ft.	
Floor	Rate
Ground Floor	4600000
First Floor	4400000
Second Floor	4500000

Note-PLC @75000 Fixed Per unit for Wide Road + EDC and IDC extra as per actual

PLAN 'PMF-DP' DETAILS

Instalment No.	Days	Percentage (%)	Remarks
1.	0	10% Booking	
2.	30	80% BSP +100% PLC + 100% EDC	At the time of Allotment
3.	0	10%	On offer of Possession

PLAN 'PMF-B' DETAILS

Instalment No.	Days	Percentage (%)	Remarks
1.	0	10% BSP	Booking
2.	30	10% BSP	Within 30 Days of the Booking
3.	60	10% BSP	Within 60 Days for Allotment
4.	0	10% BSP + 50% PLC + 50% EDC	At Roof Casting of Ground Floor
5.	0	10% BSP + 50% PLC + 50% EDC	At Roof Casting of First Floor
6.	0	10% BSP	At Roof Casting Second Floor
7.	0	10% BSP	Completion of Brick Work
8.	0	10% BSP	Completion of Floor and Tiles
9.	0	10% BSP	External Finishing
10	0	10% BSP	On offer of Possession

EDC/IDC, Preferential Location Charges, Club Membership Charges, Service Tax & Other Charges applicable.



SPECIFICATIONS - PANIPAT MY-FLOOR-1

STRUCTURE

Earthquake Resistant, R.C.C. Frame Structure as per ISI code.

FLOORING

Living/Dining	Vitrified tiles with skirting
Master Bed Room	Wooden Finish Vitrified tiles with skirting
Bed Room	Vitrified tiles with skirting
Toilet	Anti Skid Tiles
Kitchen	Vitrified / Anti Skid tiles
Balcony	Anti Skid Tiles

WALL & CEILING FINISH

Internal Wall	Oil Bound Distemper
Internal Ceiling	Oil Bound Distemper
External Wall/Ceiling Finishes	Texture Paint/Exterior Emulsion
Toilet	Glazed Tiles up to 2100 mm height
Kitchen	Ceramic Tiles 600 mm above Counter

COUNTER

Kitchen	Granite Stone Counter Top
---------	---------------------------

DOOR AND WINDOWS

Door/Window Frames	Seasoned hardwood
Door Shutters	Flush Doors
Entrance/Front Doors	One side Teak Veneer/Paneled
Windows	Seasoned hardwood

SANITARY/C.P. FITTING

White Sanitary Fixture with CP Fittings & Stainless steel Kitchen Sink of reputed makes.

ELECTRICAL FITTINGS

Electrical wiring with copper conductors in concealed conduits as per ISI code, Switches/Sockets of reputed makes.

COMMON AREAS

Staircases	Kota stone with skirting and M.S. Railing.
External Driveway/Front Opens Area	Interlocking tiles.